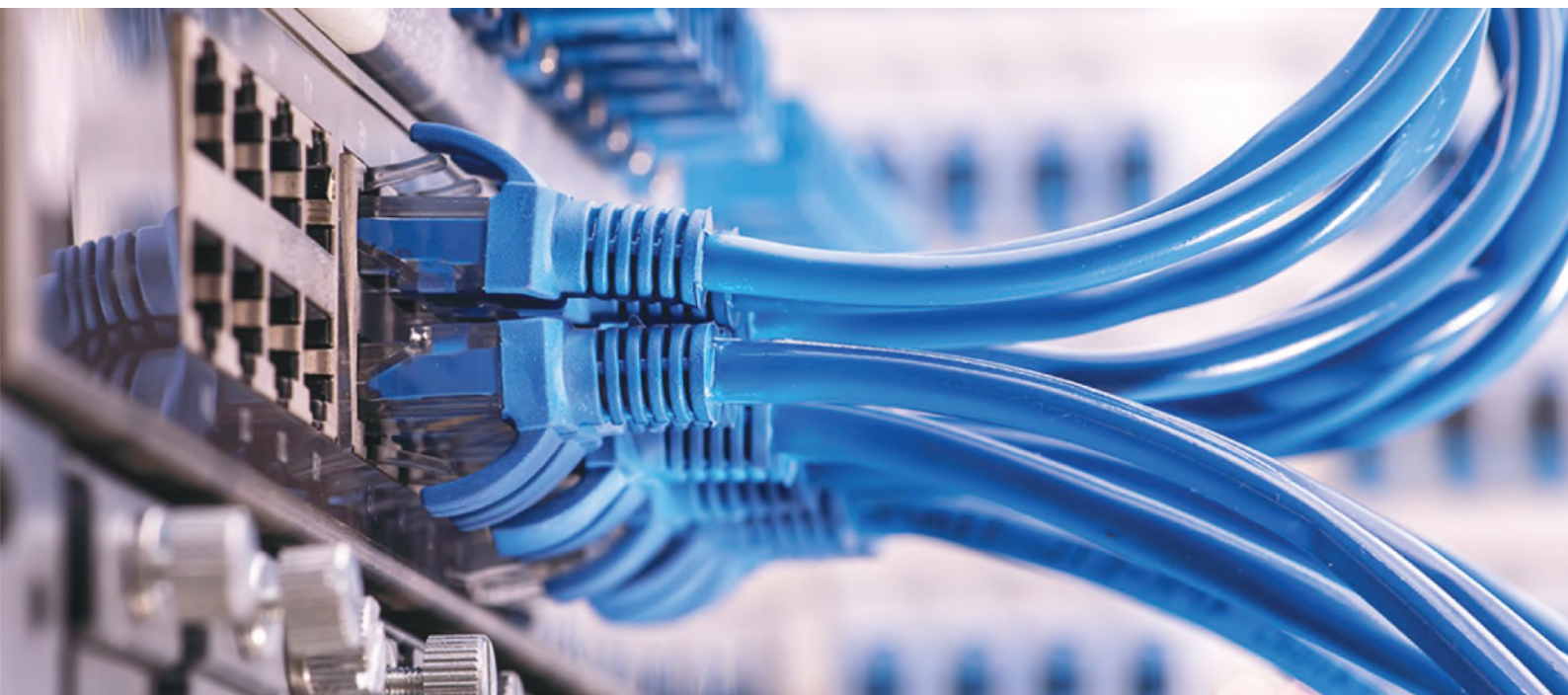


Diploma In Information Technology



Programme Structure

Year 1	Year 2	Year 3
<ul style="list-style-type: none"> • Mathematics I • Academic Communicative English 1 • Computer Applications • Mathematics II • Academic Communicative English 2 • Introduction to Information Technology • Introduction to Programming • Multimedia Application 	<ul style="list-style-type: none"> • Management in IT Environment • E-Commerce • Web Development • Computer System and Operations • Programming Concepts • Computer Hardware Maintenance • Database Design Concepts • Personal Skills Development • System Analysis and Design 	<ul style="list-style-type: none"> • Quality IT Systems • Networking Concepts • Project Management in IT • End-User Support • Data Analysis and Design • Project • Industrial Training

PROGRAMME



DURATION



ENTRY REQUIREMENTS

DIPLOMA IN INFORMATION TECHNOLOGY

R/481/4/0695 (A6792)
02/21- Linton

3 Year

Main Intakes
April
August
December

1. **SPM / SPMV / O-Level:** Pass with minimum 3 credits / Grade C including Mathematics and 1 other Science/ Technical/ Vocational subject and pass in English; or
2. **UEC:** Pass with minimum Grade B in 3 subjects including Mathematics and 1 other Science/ Technical/ Vocational subject and pass in English; or
3. **SKM Level 3:** Pass in related field and pass in SPM with credit in Mathematics; or
4. **Community College Certificate:** Pass Level 3 MQF in relevant field and pass SPM with credit in Mathematics*; or
5. **STAM:** Pass with minimum Maqbul Grade and credit in Mathematics in SPM; or
6. **STPM / A-Level:** Pass with minimum Grade C in any subject and credit in Mathematics in SPM; or
7. A Certificate or its equivalent in any discipline and a pass in Mathematics / Add Maths at SPM Level; or
8. Other equivalent qualifications recognised by the Malaysian Government.

***(Candidates without a credit in Mathematics in SPM/ equivalent may be considered for admission into this programme if the certificate programme contains subjects that are equivalent to SPM Mathematics)**

and

International students must pass:

- a) IELTS minimum Band 5.0; or
- b) TOEFL with minimum score of 500; or
- c) Cambridge/Edexcel GCE A-Level; or
- d) MUET minimum Band 2.